

WARNER GARDENS

WONDERFALL LOFT STYLEGUIDE

prepared by virtualMø
portland , oregon
USA



WALK WITH ME...

...through a luxurious garden where can be seen the most amazing collection of plants, fossils, garden-stones, artifacts, frescos, paintings and sculptures. This garden begins underground in an ancient cave, built from stacked stones on a slate floor by the hands of a forgotten people. This cave opens into a grand space overlooked by a 10 meter waterfall - a flowing sculpture inspired by the fluid nature of time, thoughts and philosophy. Gaze into the frozen Wonderfall and you may be among the lucky few who claim to witnessed an enduring glimpse of Confucius. Of course, you can not help but to marvel at the fossilized spine of a huge creature, perhaps once supporting an alien dinosaur. Later, we'll climb up the spine to another level of the garden. But let us not linger here, for there is much more to see!

We continue our walk through the lush colors of deep, dark blues and greens of a cypress grove until we come to a picnic table. It is surrounded by a wall made from stacked black marble and glass. Each pane of glass contains a single word, that when connected in totality reveals a poem. It is sunset and the gentle breeze is warm and soothing. We might sit for a meal of rice and wild vegetables while we ponder the words, but there is too much yet to see.

We walk back to ascend the fossil staircase coming into a lively and inspiring area that gives us the sense of great elevation - perhaps as close to the Ethos as man has ever come. The air is light and cool, the surfaces are soft and inviting, and the heaven above is set apart from us only by a thin veil of silky clouds. We are high, yet we'll go higher!

A small vortex of air carries us higher yet. We are now looking down on the Earth from the Ethos. We are lighter than air, we float with dandy-lion puffs and bird feathers - we sleep on a cloud.

This is the intended experience. This is luxury like never before experienced in China. This is the Wonderfall Loft!

十五從軍征
 十五從軍征
 八十始得歸
 道逢鄉里人
 家中有阿君
 遙看是君家
 松柏蒼蒼
 兔從狗窟
 雉從梁上
 中庭生旅
 井上生葵
 採葵作餼
 莫知一贍
 不出門東
 淚落向我





site

Warner Gardens is an existing residential development in the heart of China's TEDA in Tianjin. Two hours drive south of Beijing, Warner Gardens and its anchoring golf club represent an upscale living opportunity for the city's rapidly growing upper-middle class.

The structure itself has a very western design sensibility and is generously fenestrated throughout.

The most challenging element of the project was the conversion from the existing three-unit floor-plan to an efficient, yet generous use of space concept that could integrate the three units into a single, harmonious, well-balanced home.



7th FLOOR - RESIDENCE



8th FLOOR - ENTERTAINING

The floor plan has been divided into two distinct sections: the 7th floor, which is intended as the main residence of the occupants, and the 8th floor, which is intended as a guest and entertaining area.

Each floor is further divided into logical areas defined by use. There are seven such areas on the 7th floor and five on the 8th.

Though cutting through the existing poured concrete surfaces is inevitable to achieve an integrated floorplan, a minimum inventory of cut-throughs has been specified. Additionally, some utility services will require remapping, but again, this has been kept to a minimum and, in fact, has yet to be specifically addressed as that level of detail is beyond the scope of this phase.



color concept

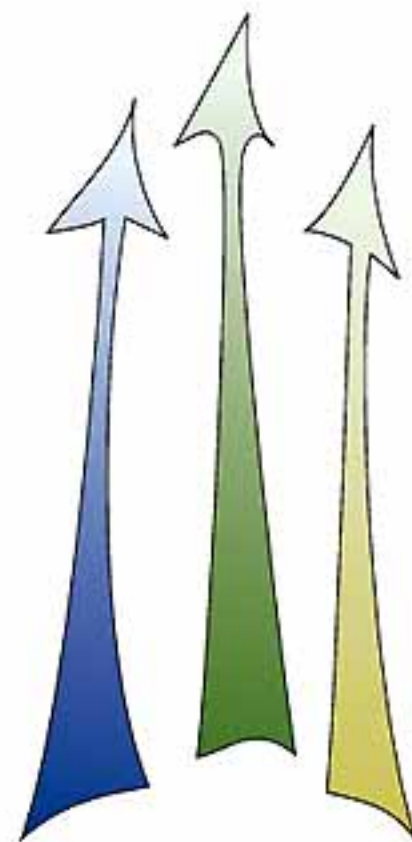
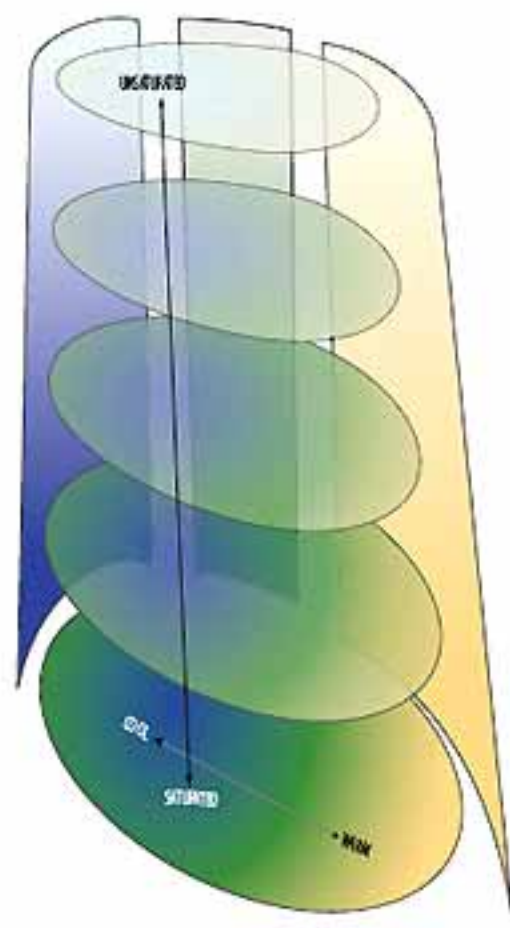
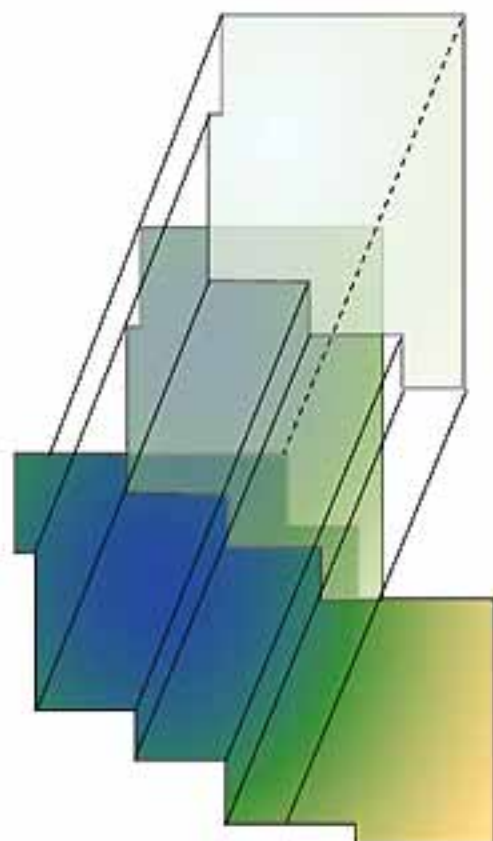
One of the most central and unifying concepts to these designs is the use of color to create a well ordered and coherent visual consistency.

The color concept is three-dimensional, extending in three planes. These colors start with cool blue and transition to warm, light gold.

The color continues to transition along the Z axis, again, starting from the floor of 7A extending vertically to the ceiling of the eighth floor as the color moves from saturated colors toward white.

This color guide is not intended to be referenced directly, as in all surfaces of space 7B should be blue-green. Rather, this color schematic is meant as a guide to the dominant color of a given space, even if the use of that color is sparse.

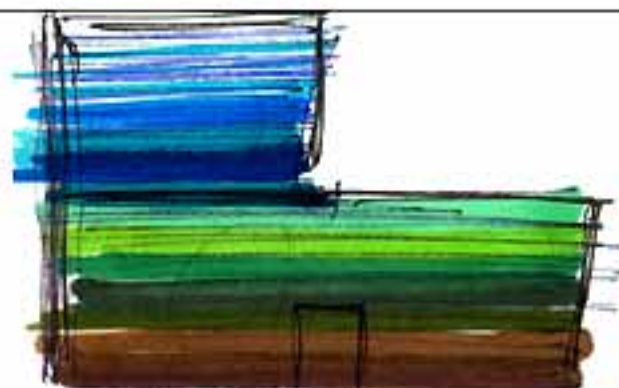
You'll find a swatch of color at the upper right hand corner of each page that details a section.



ETHOS



PATHOS



WARM

COOL ← → WARM

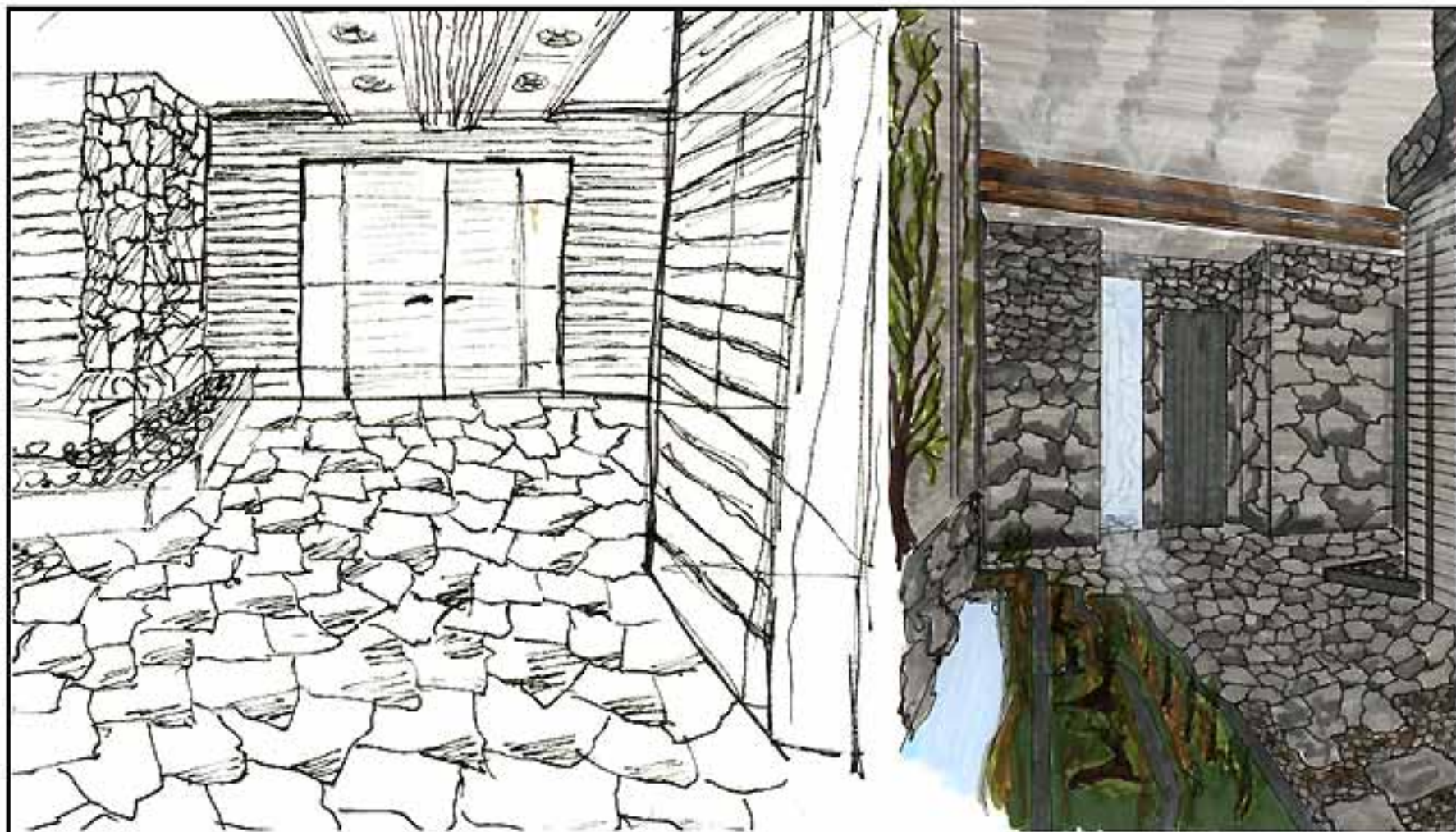
SATURATED



HEAVEN
[SPIRITUAL]



EARTH
[MATERIAL]



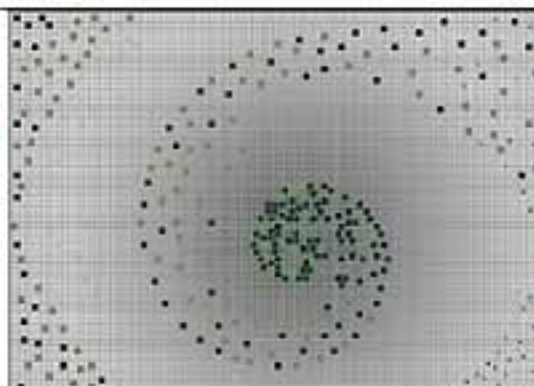
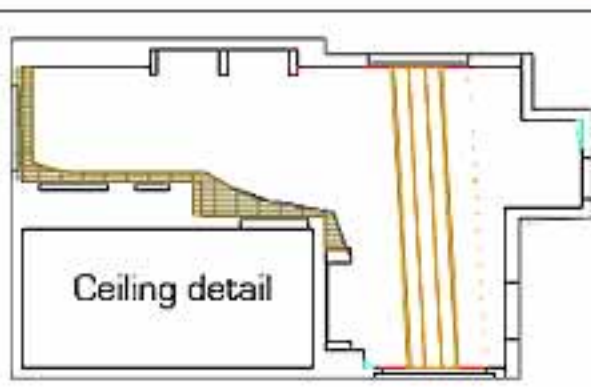
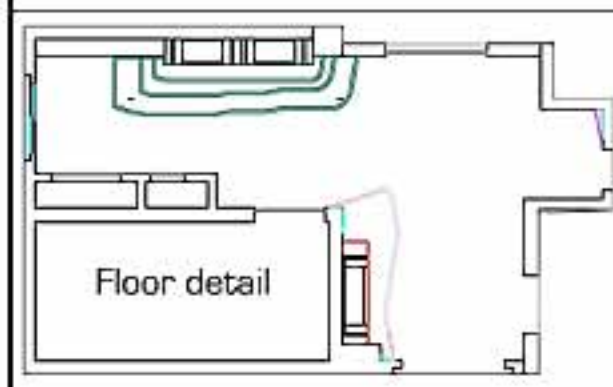
7E

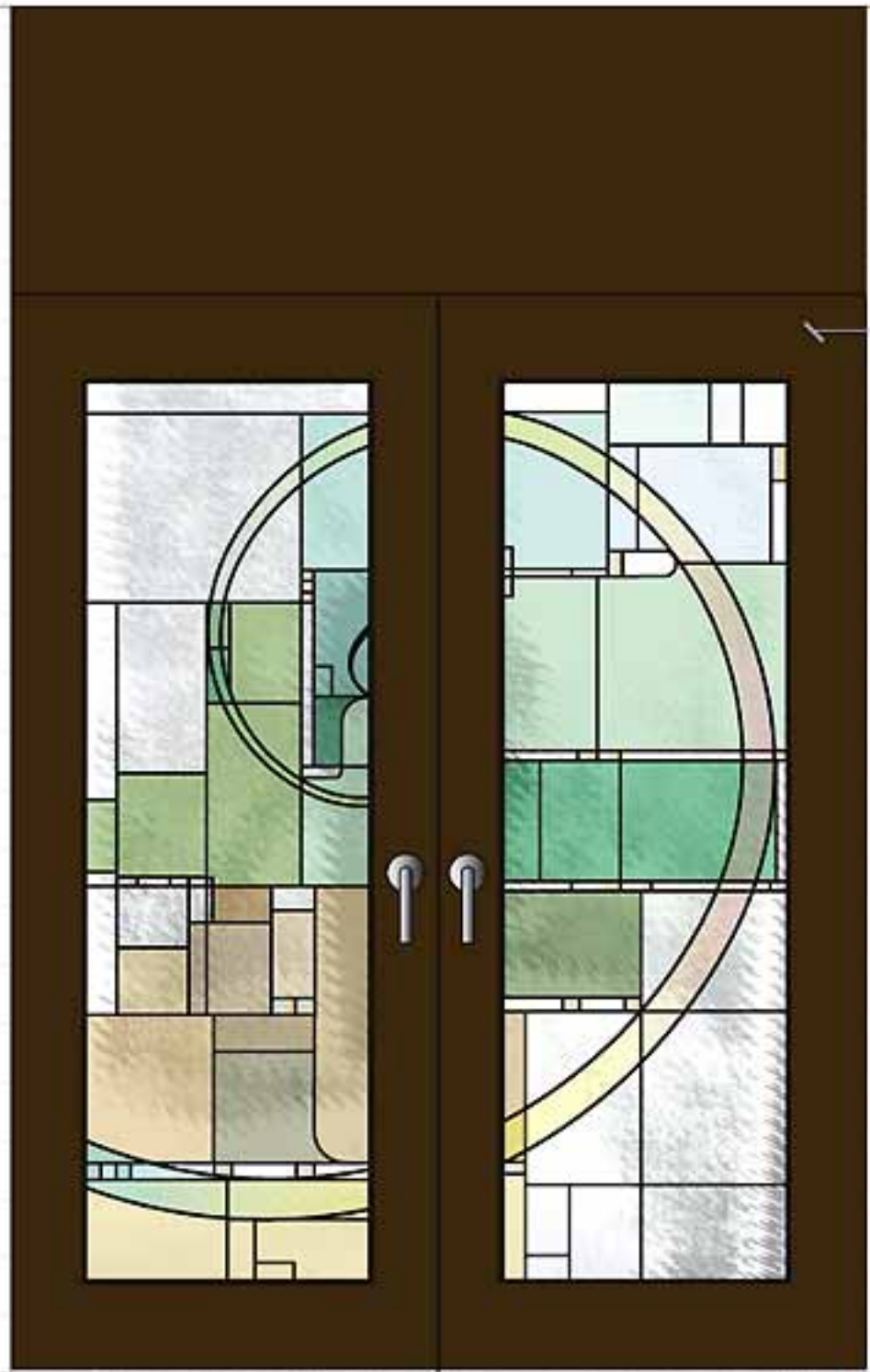
project: warner gardens cypress left

room: indoor garden

The drama continues out of the Foyer and to the entry where the first leaded glass work is experienced. Through line and color, the particular design would begin to communicate the design foundations of the whole space.

Once through the elegant doors, the visitor beholds a beautiful tile mosaic of the Golden Mean. This graphic continues to sub-consciously "prime" the visitor's awareness of the subtlety and sophistication of the design concept.



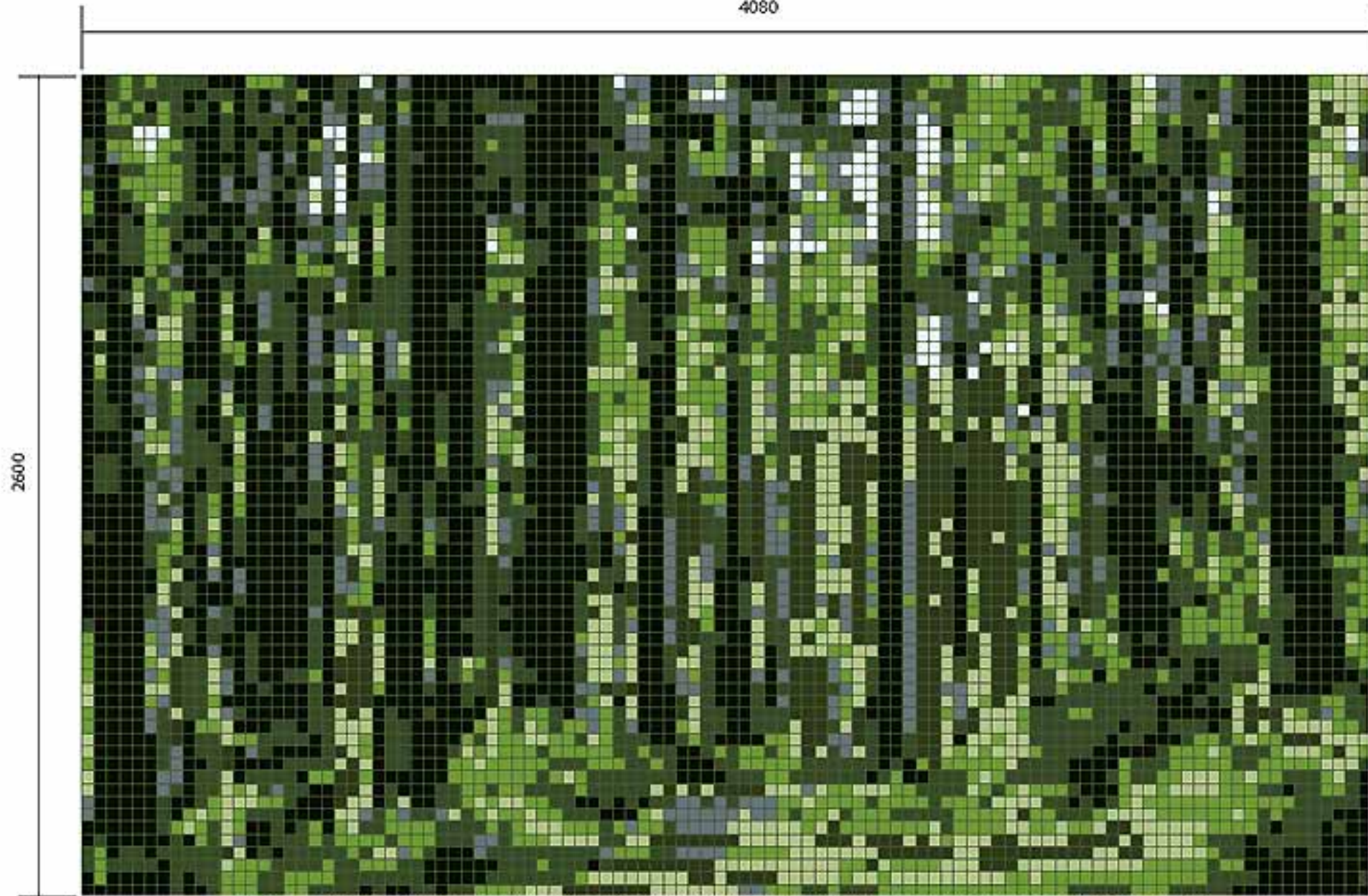


Dark Hardwood (Chestnut)



7F Entry Door Detail

061110



2600

40mm square tiles
flat (matt) finish



Light Sage

Sky Blue



Leaf Green

Dark Green



Dark Olive

Medium Grey



Burnt Umber



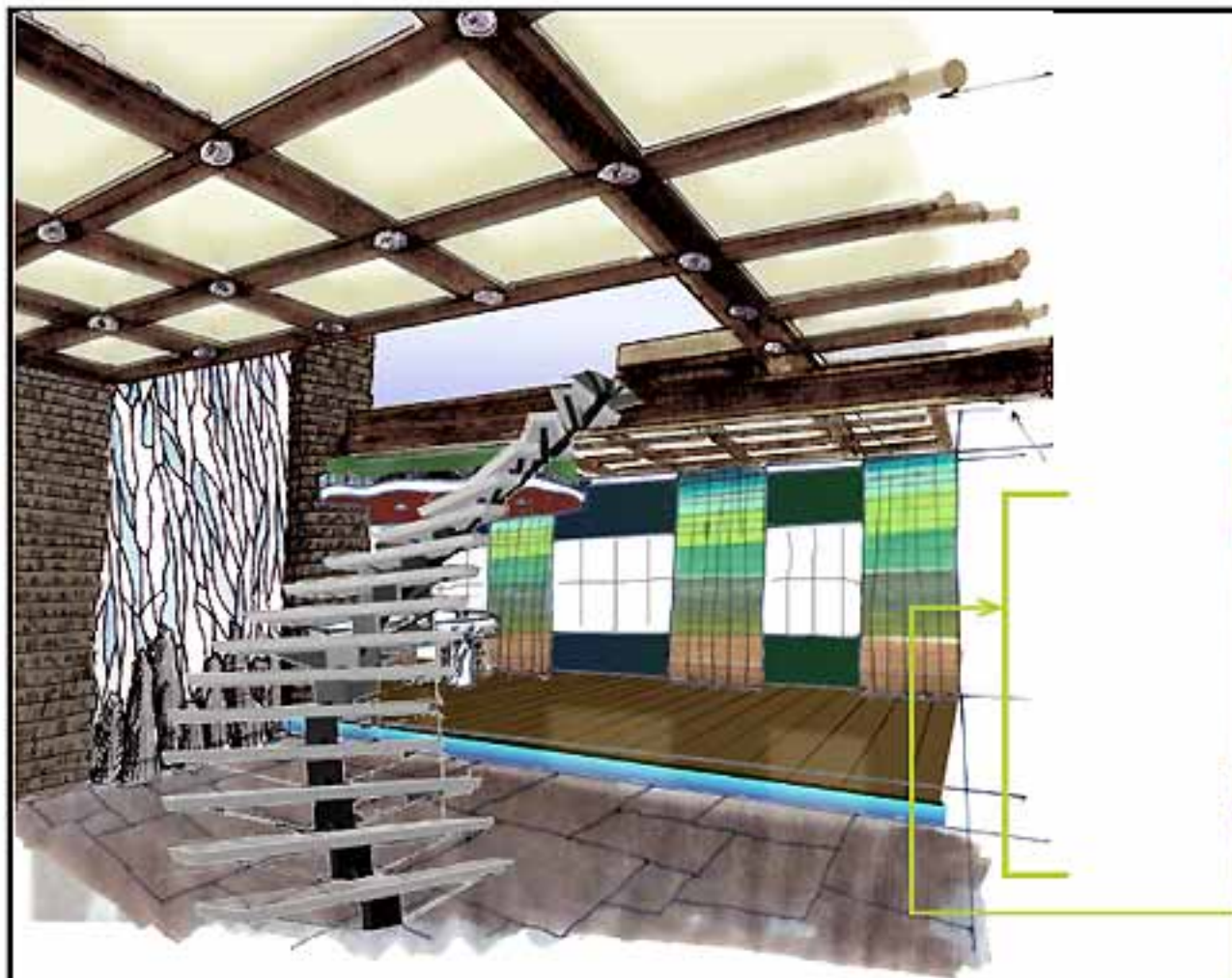
Grout - Cobalt or Medium Blue

© 2006 J. E. Morales dba virtualMo. virtualMo and the "KeyMo" logo are trademarks of VirtualMo, LLC all domestic and international rights reserved

7F ENTRY - MOSIAC BY MO



061111



The main living area will see the majority of occupant activity. Here the residents will enter the domicile, lounge, entertain themselves with home theater, transition to the bedrooms and the upper level, and cook their meals in the "Western Kitchen" if and when they choose to do so. Here, family guests will be entertained. It is intended to convey luxury in the context of comfort.

The floor is slate with an edge-to, low rise of dark hardwood. The dimpled extruded ceiling is treated with a grid of 200mm x 20mm hardwood planks fastened to the ceiling at the intersections of these planks with a decorative medallion. These planks obscure from sight a series of lights that reflect off the interior of the extrusions. The inside the honeycomb extrusions are finished with a golden "Venecian Plaster."

The wall opposing the Waterwall features a built-in shelva/cabinet.

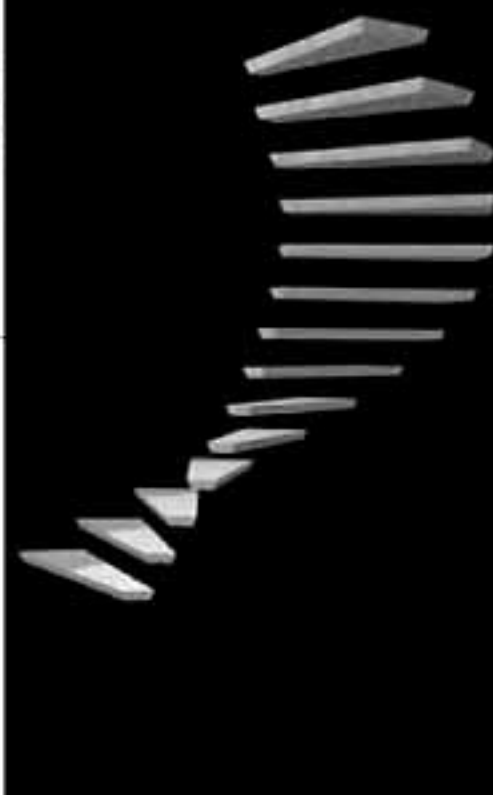




7A

www.scheme one

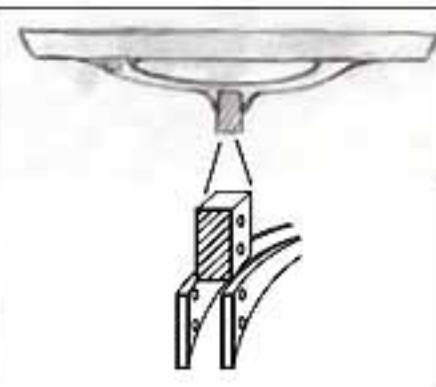
www.fossil-spine staircase

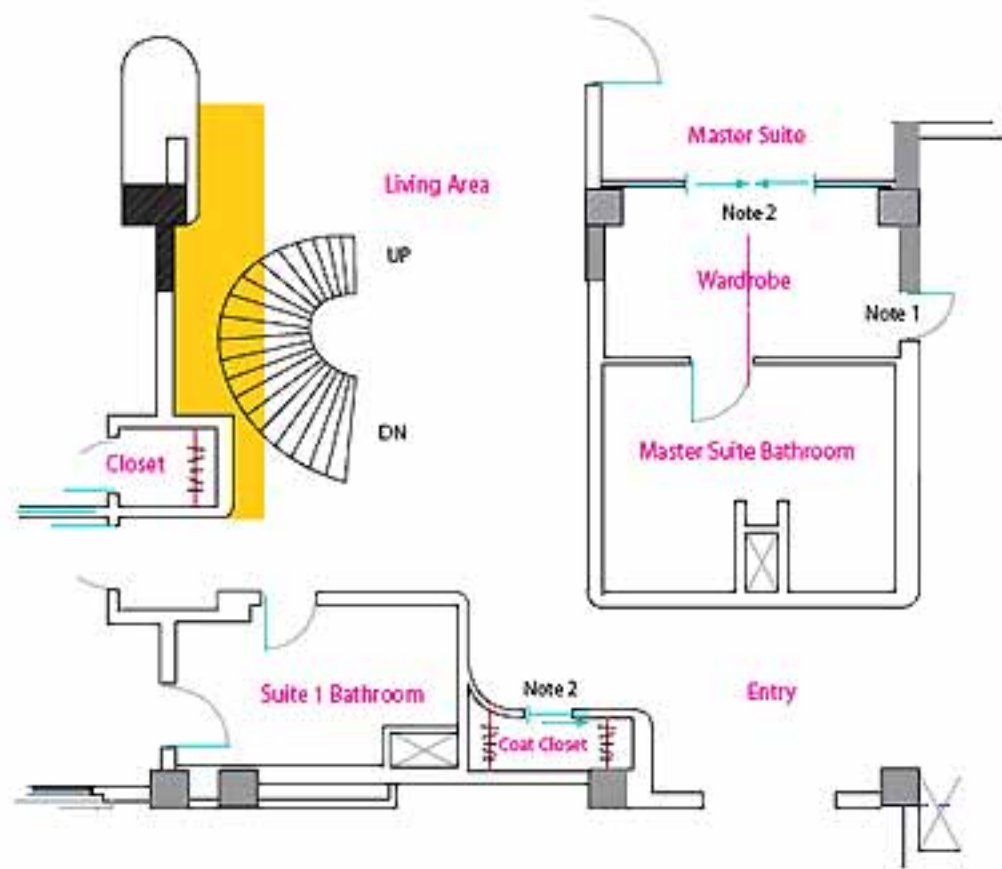


Here lies the unearthed backbone of the space - literally. This sculptural staircase is the giant fossilized spine of an extinct beast. Looking from the top down, it is the shape of the Golden Arc - a mathematically pure curve found ubiquitously throughout nature.

The spine is designed to minimize the visual distraction and clutter before the Waterwall. This is achieved by the relatively low profile of the staircase. The stair treads are supported by a pair of parallel hardened aluminum flatstock lengths with a cross section measuring approximately 3cm x 12 cm. They are supported by a flange at both the top and bottom as well as bolted together at each tread. In theory, once installed, this assembly will resist spring forces due to its own torsion; thus eliminating the need for additional vertical supports.

Lastly, as the treads descend, the width increases from approx. 800 mm to 1200mm like the walls of the nautilus.



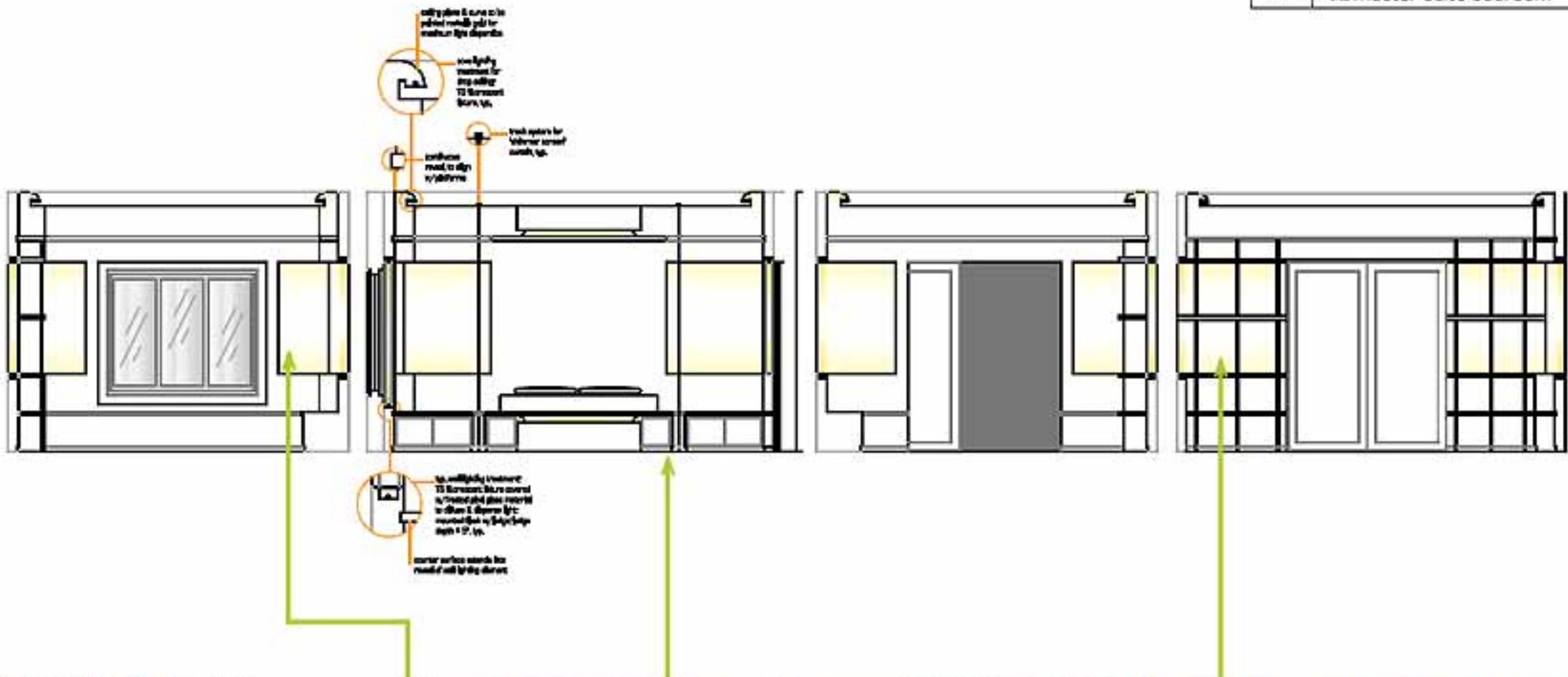


The Wonderwall is the axial decorative, as well as conceptual, feature. It represents flow: energy, light, air, water, spirit, vision, knowledge, time, thought, idea, and philosophy, all flow vertically. In Chinese medicine, trees are considered antennae that conduct spiritual energy between here and above. The Wonderwall was inspired directly by a cypress tree in the Cypress Garden of the Forbidden City and acknowledges the harmonious philosophies of Confucius and other great thinkers.

The wall is made of striated stone layers like sedimentary layers in the sides of mountains. It represents the killing effect of time, weight and stagnation, and cuts perpendicularly across the flow if the living. Through it is a limestone slab that extends beyond the right side and terminates into a bar sink. Garden stones finish the bottom.

The wall itself is either back-lit stained glass (technically challenging) or shapes of porcelain glazed with appropriate white, blue and green and adhered to the concrete wall.







SINCE
7C
 www.schemata.com
 www.diningroom.com

The resident dining area is meant to invoke the feeling of an outdoor mid-summer evening after sunset. The marble-block and glass wall extends around the perimeter giving the area an outdoor patio feeling. The window casing is treated to appear as a shed, or gateway.

The walls are painted with the super-saturate warm colors of an evening sunset. Silhouettes of distant cypress trees painted in black create a sense of distance and drama. Walls are flooded evenly with lights from behind the marble wall.

The sculptured ceiling is treated with a hand-carved vine-like wooden sculpture that conveys the sense of a vine-covered trellis.



Green
 cypress
 Boulders
 rushing
 and
 a
 take

so
 over
 upon
 ravine.
 Earth,
 long
 joy

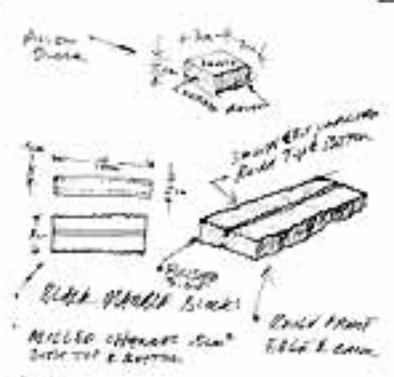
green
 the
 the
 boulders
 Born
 a
 distance
 from

are
 burial
 in
 between
 man
 traveler.
 this

the
 mounds.
 the
 Heaven
 is
 Let's
 pitcher

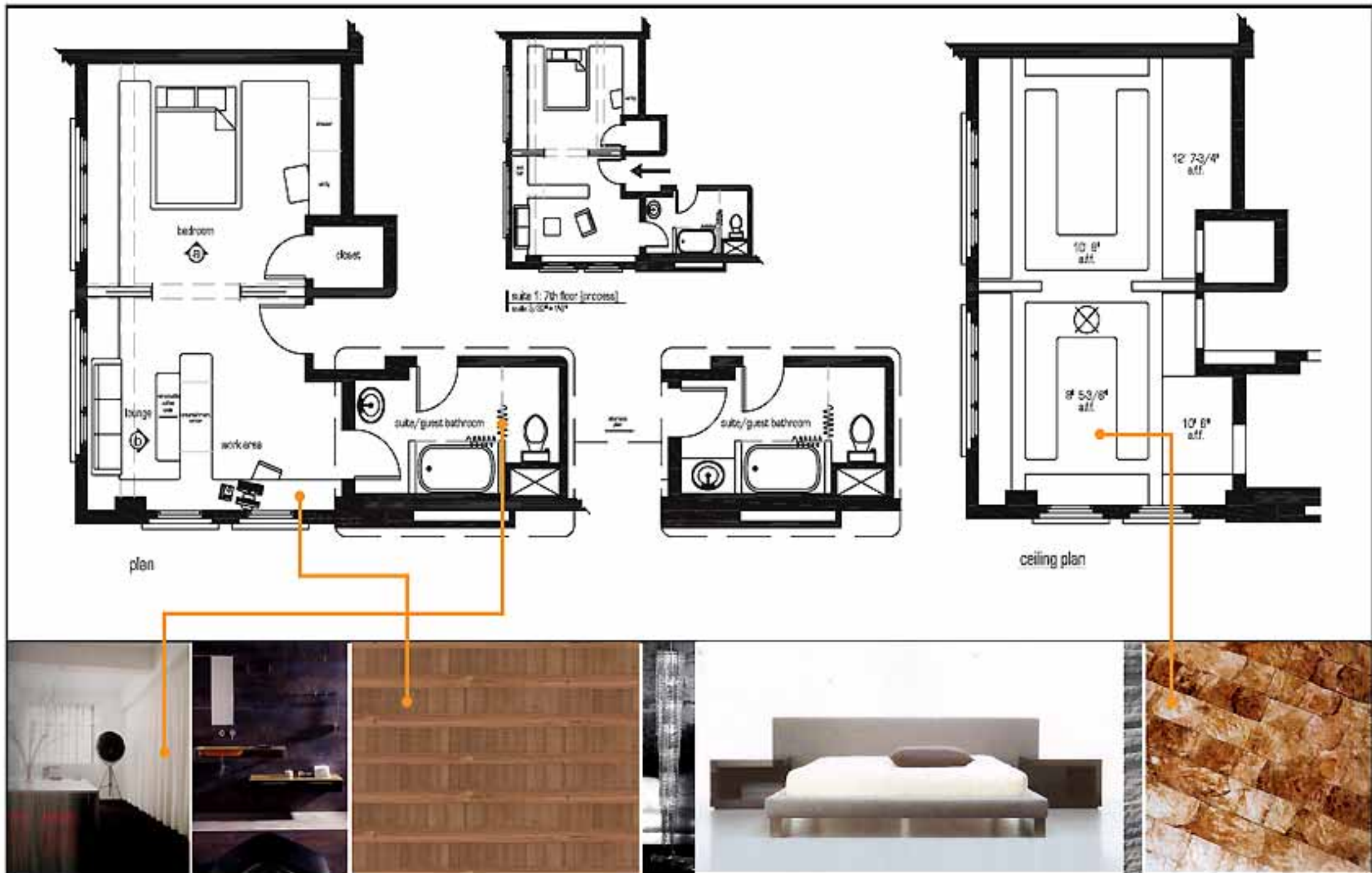
Green so green are the cypress over the burial mounds.
 Boulders upon boulders in the rushing ravine.
 Born between heaven and earth, a man is a long-distance traveler.
 Let's take joy from this pitcher of wine and drink with heart, not thin pleasure.
 Whipping slow horses pulling our wagon, we'll play at Wan and Luo.
 It is so noisy and crowded in Luoyang, where officials with caps and belts visit each other,
 on main streets and tributary lanes with mansions owned by kings and princes.
 The two palaces gaze at each other from afar yet their watch towers seem just a sun-ared feet apart.
 Let's exhaust ourselves in banquets to entertain our hearts!
 Sorrows and melancholy—who needs such pressure?

- Unknown Chinese Poet



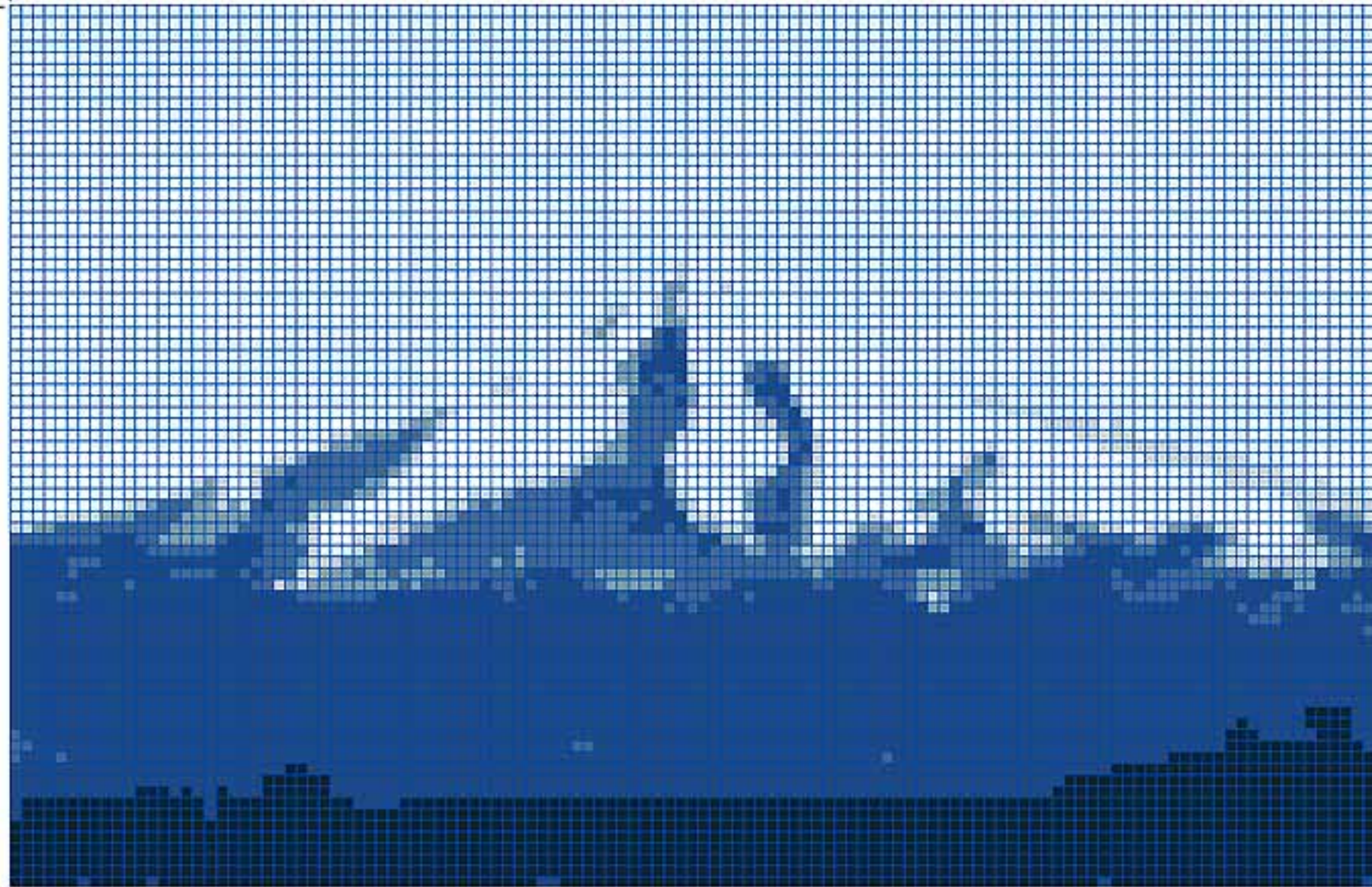
- CLEAR
- SCRIPT FONT
- BLACK MATT ON FRONT
- REAR: GLUE-CHIPPED, CLEAR GLASS PANELS.





4820

3100



40mm square tiles
flat (mat) finish



Eggshell Blue



Sky Blue



Light Grey



Medium Grey



Steel Blue



Cobalt Blue



Midnight Blue



Grout - Cobalt or Medium Blue

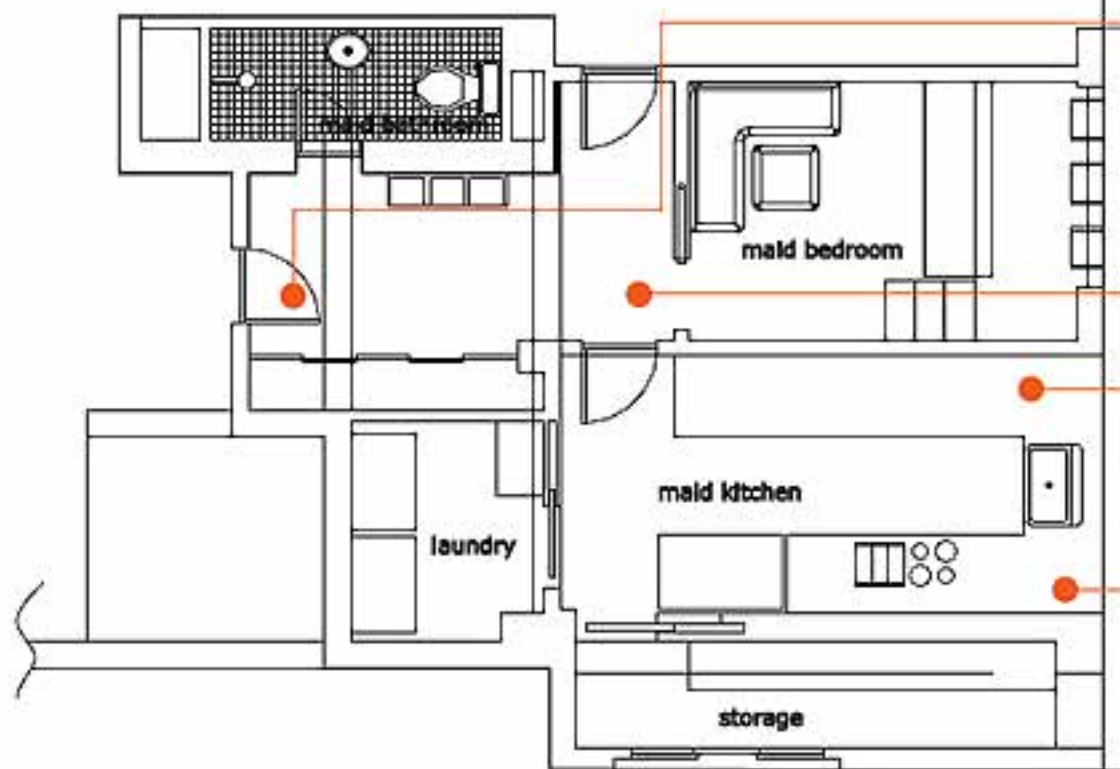


© 2006 J. E. Morales dba virtualMo. virtualMo and the "KeyMo" logo are trademarks of VirtualMo, LLC all domestic and international rights reserved

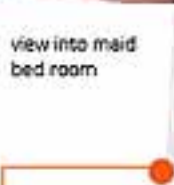
8F MEETING ROOM - MOSIAC BY MO



061111



view into maid quarter



view into maid bed room



Siematic SC60 modular kitchen unit



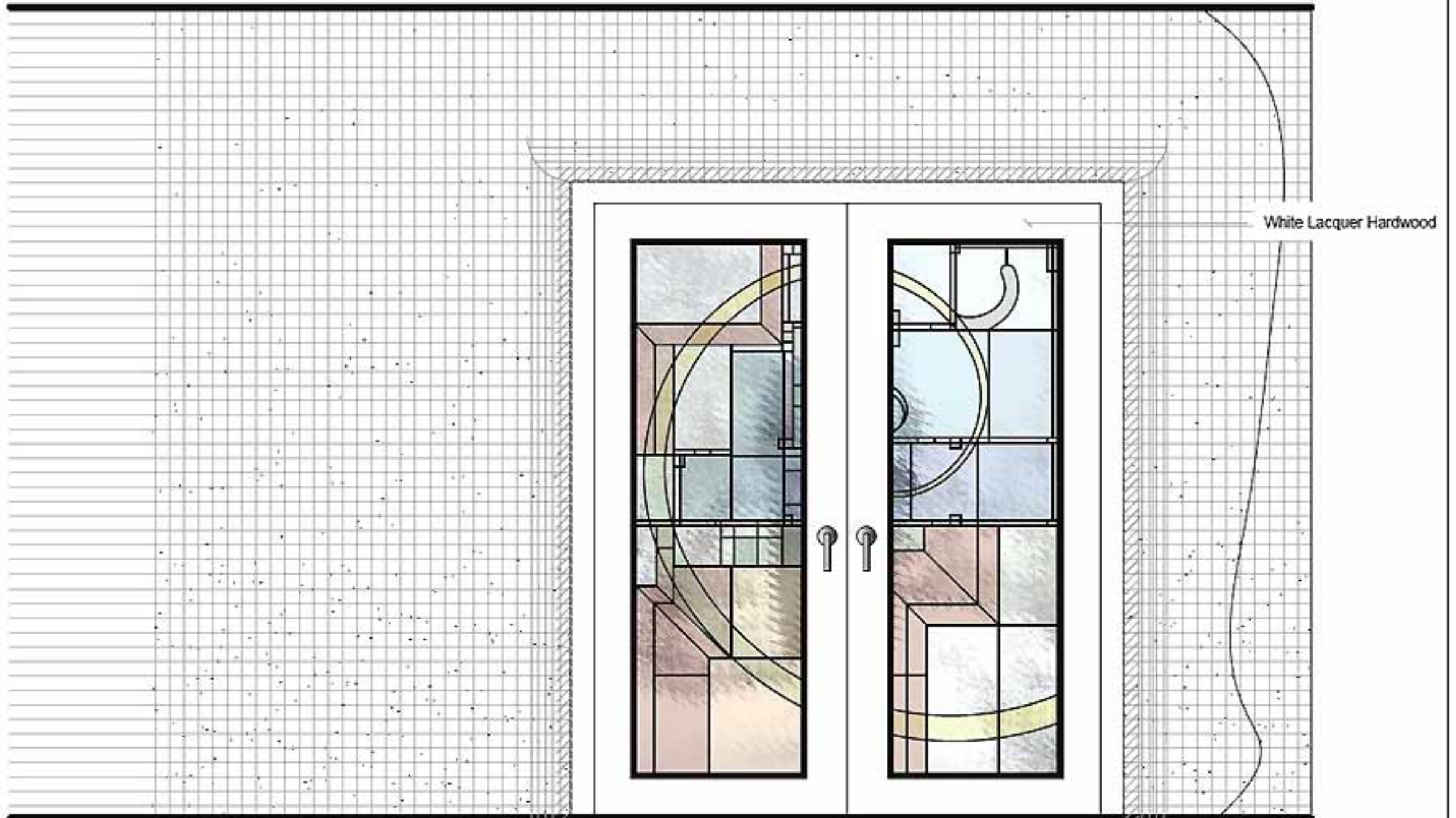
Efficiency is the key word for this space. The colors are kept off-white to give a sense of warmth and simplicity and a limited selection of materials centers around smooth, clean surfaces and edges.

The bedroom has a built-in "drawer" bed that can be pulled out from under a platform. This allows the occupant to easily reconfigure the very limited space,

The rest room is designed as a Wet room to maximize the use of space.

We have specified a kitchen system from Siemens called the Siematic SC60 modular kitchen unit which is available in China.



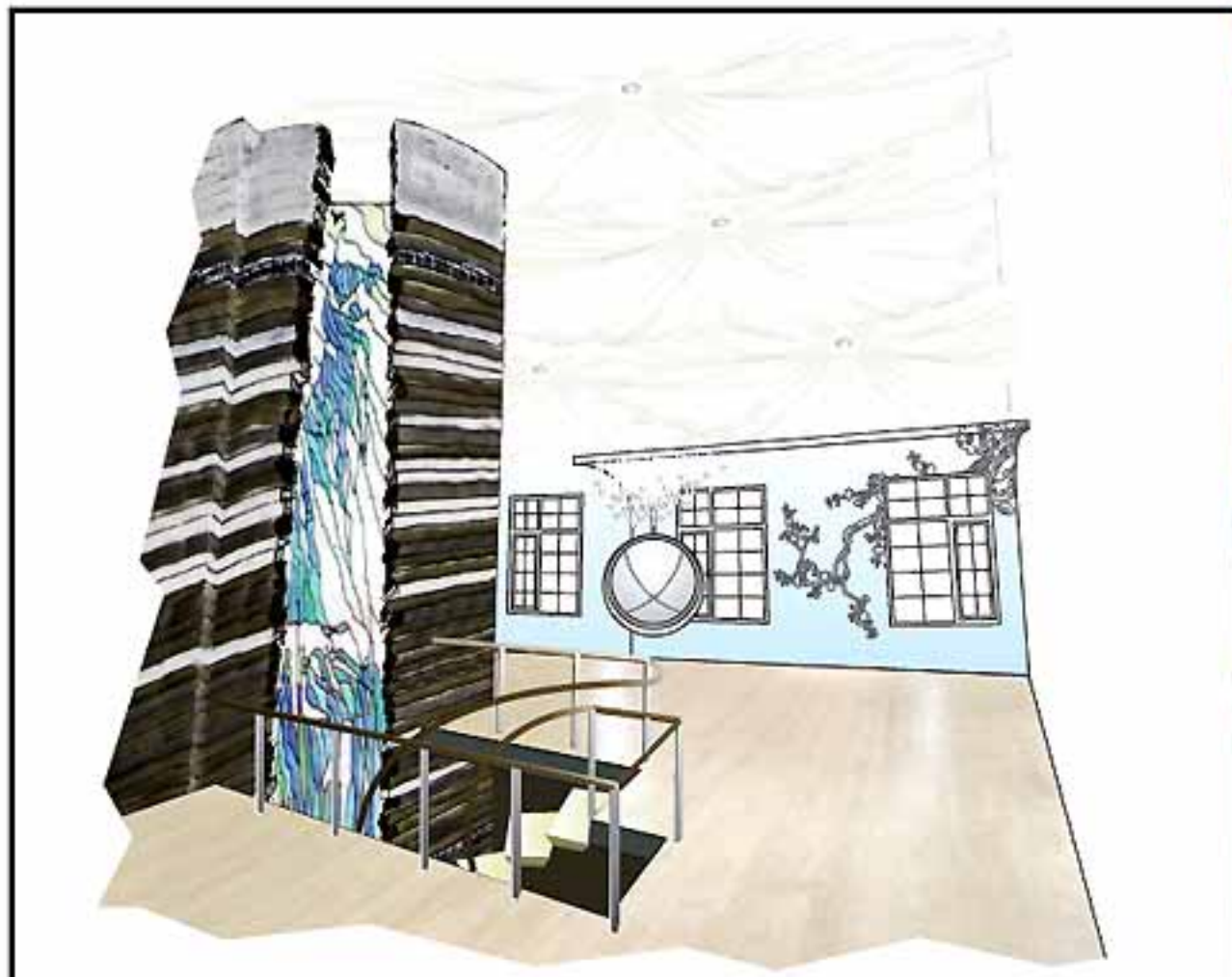


© 2006 J. E. Morales dba virtualMo. virtualMo and the "KeyMo" icon are trademarks of VirtualMo, LLC all domestic and international rights reserved



061117

8F ENTRY DETAIL - ART GLASS DOOR



8A
www.scheme one
www.entertainment area

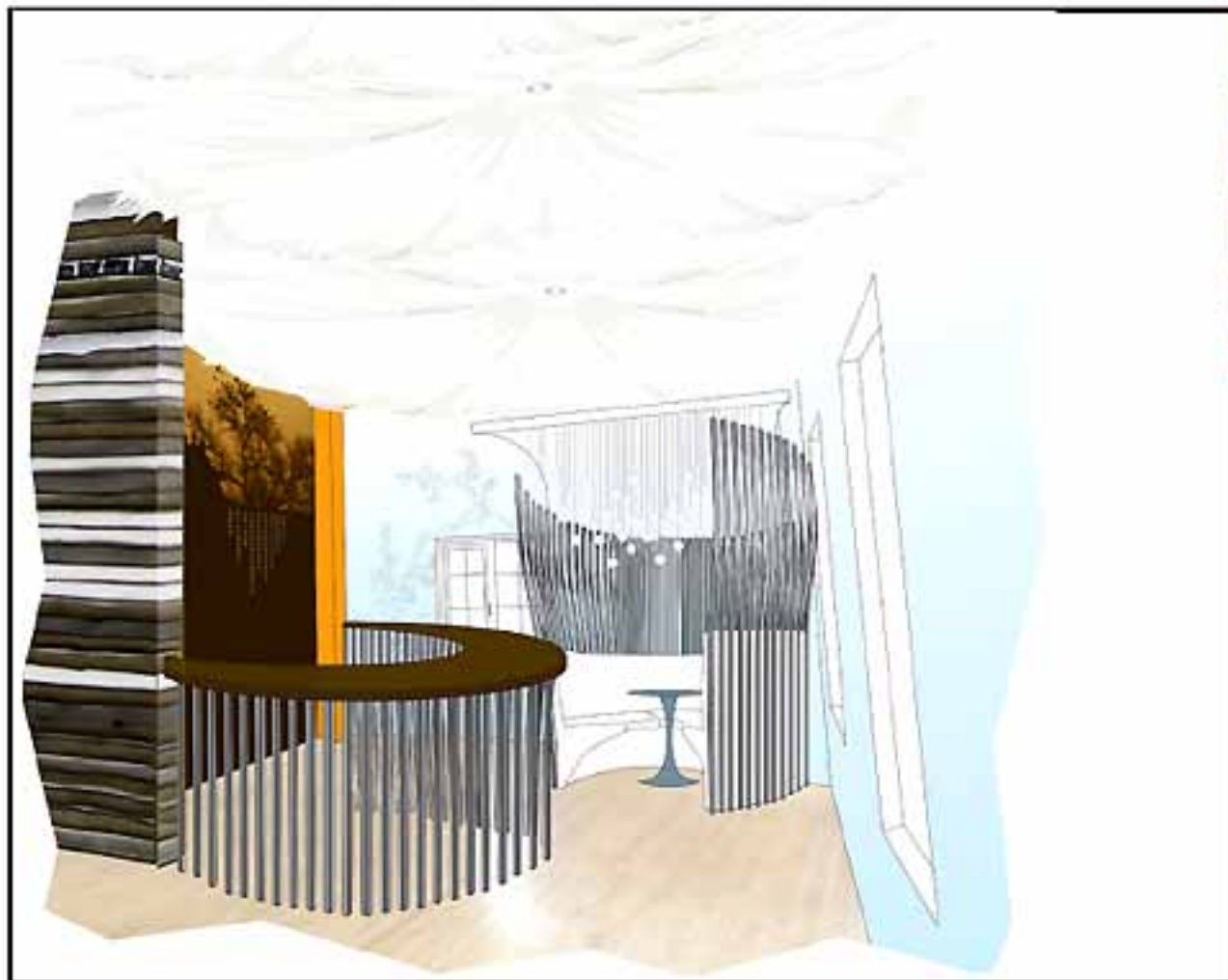
Maximalist restraint - Art Nouveau references meet organic forms to create a light and airy fantasy playroom floating in the air. Softness of color and ornate textures juxtapose against the raw power of the feature Waterwall. A pod chair hangs like an airborne soap bubble.

Passion is created, energy is formed... an adult playroom exists in the sky. Open the divider doors to the neighboring "super guest suite" to see the playroom open and continue.

The ceiling is treated with billowing white satin or silk and is lit from behind this flowing fabric. This diffuses the light creating a serene, glowing, and soothing light for the whole space.

[Railings shown are for reference only, not intended to suggest actual design]





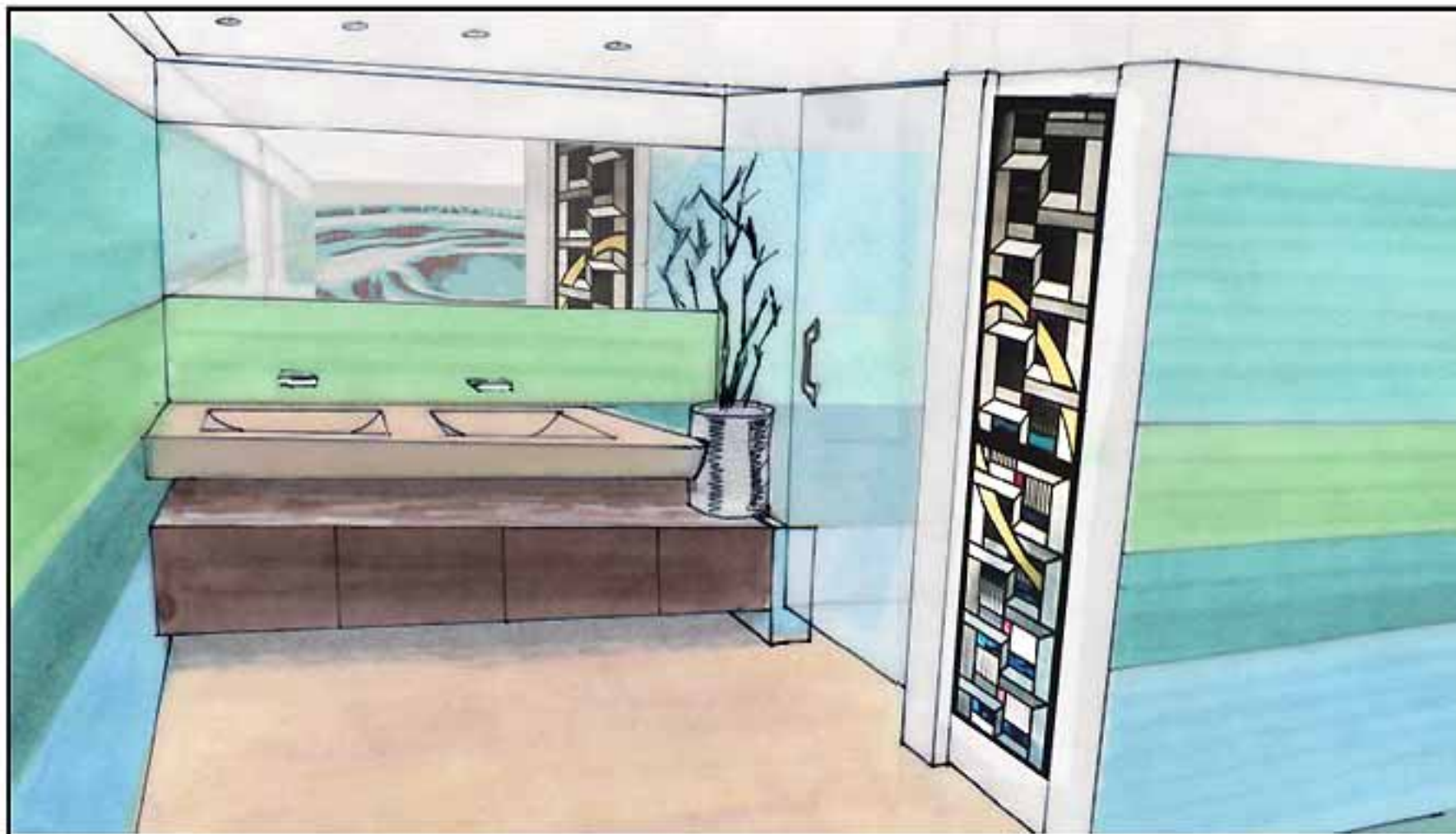
SPACE	www.scheme one
8A	www.wet bar

Musical bar and movement.

Stainless steel rods create an intimate atmosphere around white leather bench seating. But, surprise!... they carry a dual purpose of being able to be played musically. Run your palm along their forms and listen to them whisper to you as they move in the air... like reeds swaying in the summer breeze. Their form is referenced in the bar itself. Furnish with bold natural materials. Surprise with dramatic golden light.

在新奇巧又
 淺具微弱的聲息
 是宮女不敢出聲的嗚咽
 在冥白太監完結的尾音在而
 是火枝在柳的沉重嘆息
 想來和夜最上會制在枝的拉更在
 如同一個悲劇
 在一個小幽著的晚上
 度度响起





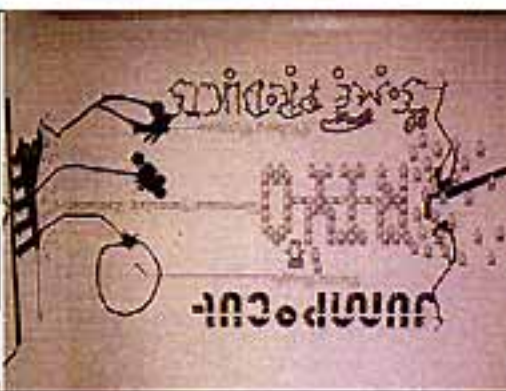
8B
 version scheme one
 super guest suite

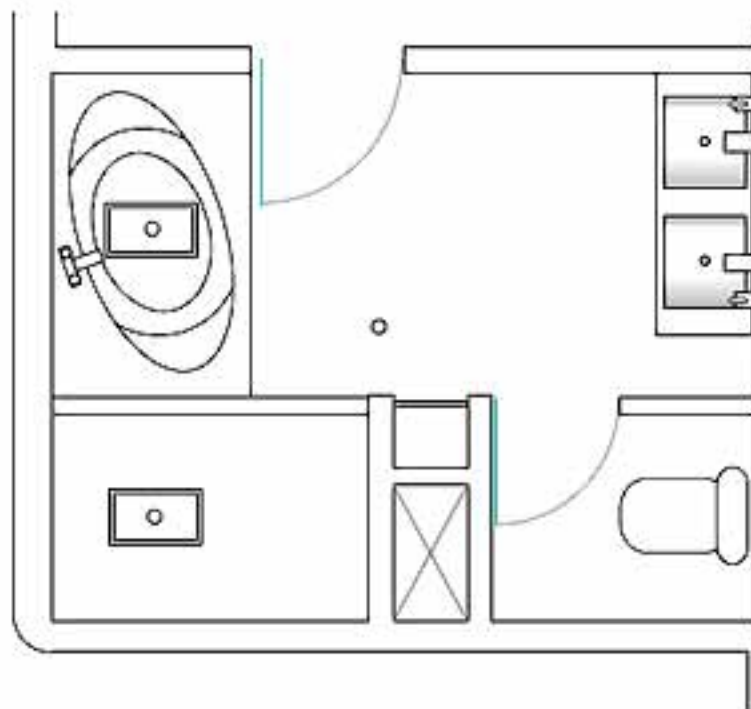
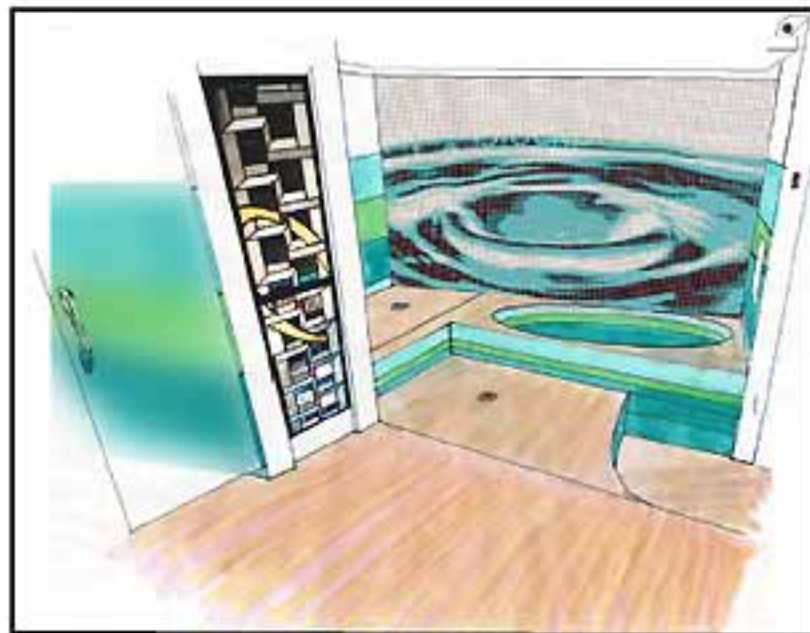
This area is all about luxury. The materials are top-notch leathers and silks. Heavy use of crystal details and silver-colored metals create a sense of lightness and electricity.

One main feature of this space is the luxurious bathroom. Featuring a large, double-use bathing area that can be filled to one level to be used as a bath tub or filled further and used as party sauna.

Additionally, the Super Guest Suite features a loft level where the sleeping area is contained. This allows the floor-level area to be maximized for relaxation.

The Super Guest Suite can be opened to allow an additional mingling and lounging area off of the main entertainment zone and the faux-fireplace to be enjoyed by many.





--- fill to here for jacuzzi party

--- fill to here for bath

8B
www.schome one
www.super guest suite

The Super Guest Suite bathroom features a part zaccuzzi and a "rain-style" shower that drops water from the ceiling as opposed to a wall-mounted showerhead.

The floor is a light sand colored limestone polished to a smooth, but not glossy sheen to reduce slippage.

Built as a wet-room, the entire space can be wet-down, steamed-up, and lounged in for maximum relaxation and enjoyment.

Lastly, the main wall over the tub and shower area features a mosaic tile graphic of a water droplet and its corresponding wave.



3140

8F SUPER GUEST BATH MOSIAC BY MO

20mm square tiles
flat (matt) finish



Blue 1



Blue 2



Blue 3



Blue 4

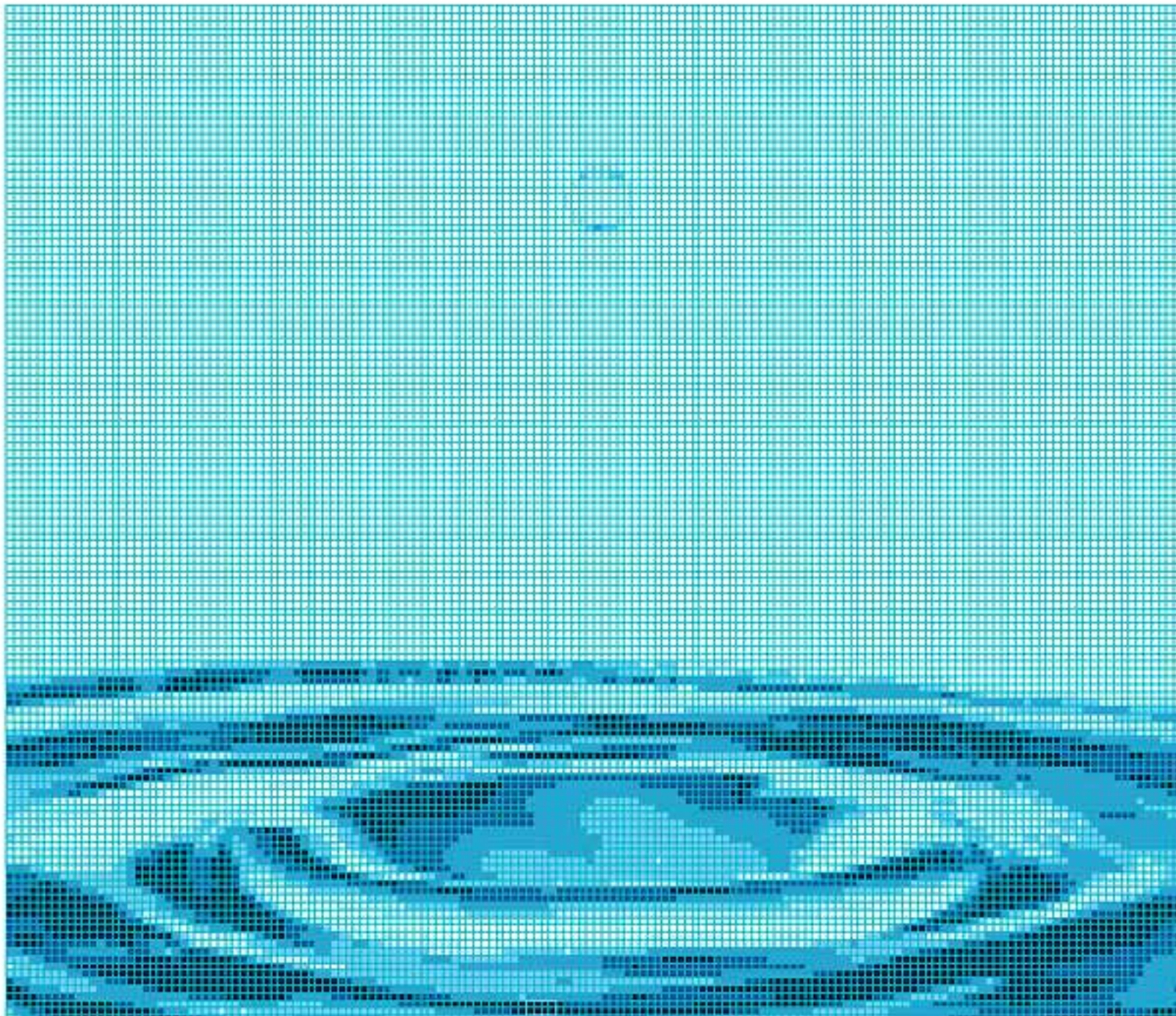


Blue 5



White

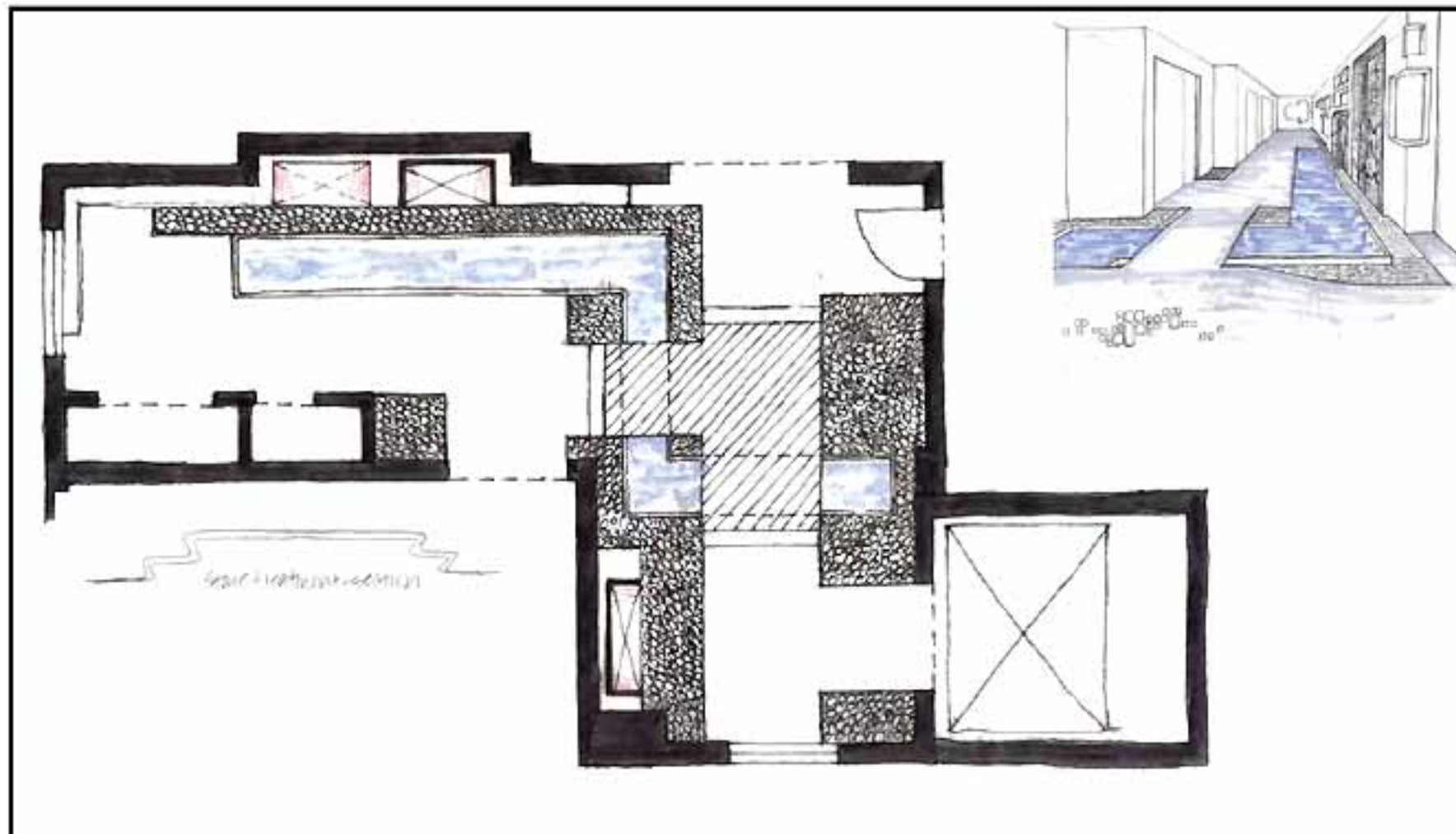
2700



Grout - Seafoam Green



061111



SPACE	version: scheme one
8E	www: indoor garden

Corresponding to the color scheme used for the overall space, the mosaic tile wall represents the change of a high saturation to a low saturation while the Golden Mean spiral directs the eye to the adjacent spaces.

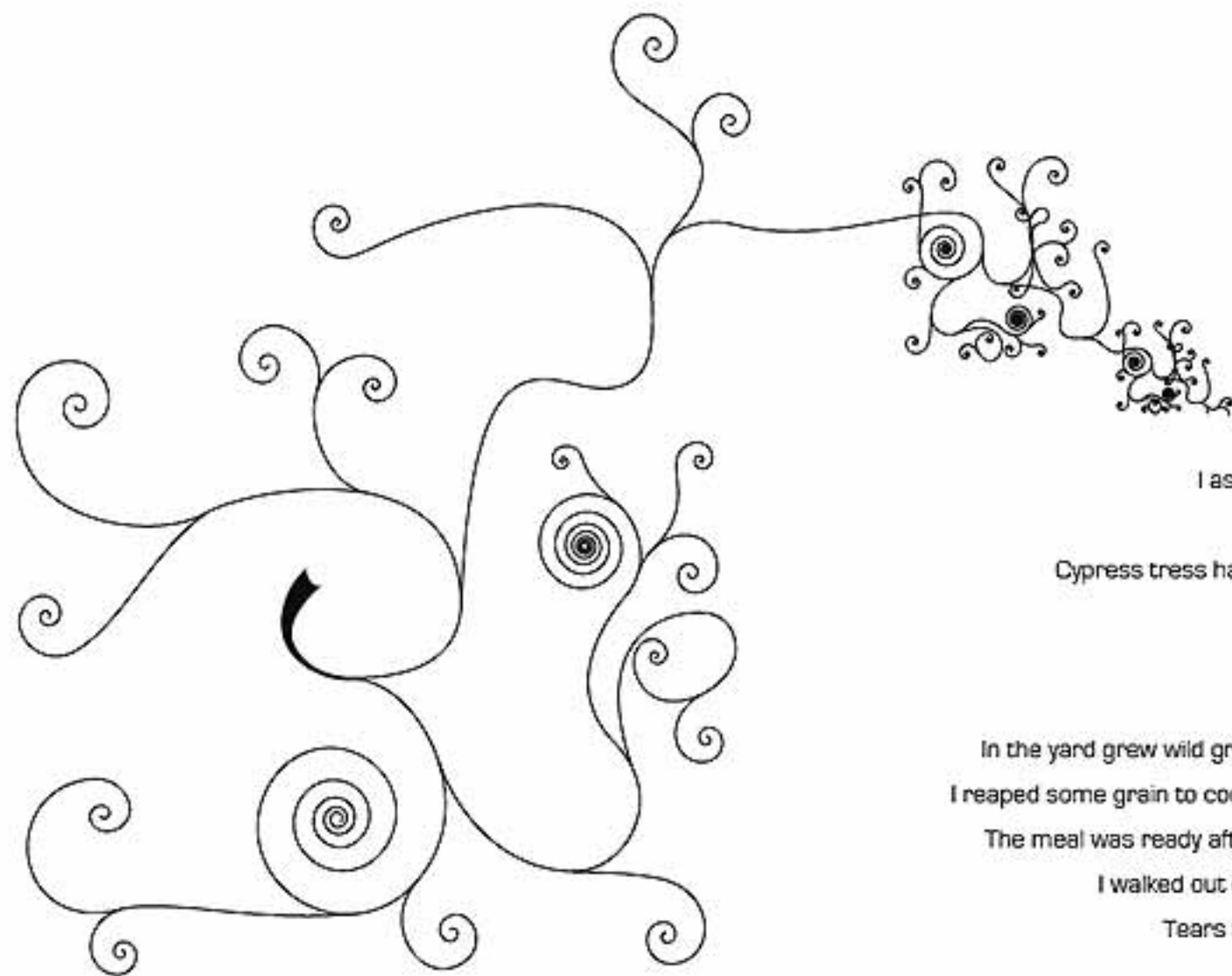
From its center outwards, the color density recedes creating a far-reaching sense of openness. Since the entry is a narrow, rectangular shape, the visual flow of the golden mean guides the eye of the visitor either to the left, or the right.

Like the entry glass designs, the spiral mosaic uses color and line to communicate the grand concept of color and energy flow.

Unlike the underground cave theme of the 7th floor garden foyer, the 8th is light and airy and uses white marble to invoke a classical beauty and elegance.

The large areas of water function as khol ponds to convey the sense of flow.





THE CYPRESS GROVE

I served in the army at 15
At 80, I returned to my hometown
I met a town folk on the road
I asked him "Who is still alive in my family?"
"The house over there is your home.
Cypress trees have grown over their tombs." He replied.
I went close to my house
Wild rabbits where my dog once lived.
Chickens clucked about.
In the yard grew wild grain and wild vegetables around the well.
I reaped some grain to cook rice, picked some vegetable for soup.
The meal was ready after a while, but I felt sad to have it alone.
I walked out of the gate, and looked toward the east.
Tears fell from my eyes onto my army clothes.

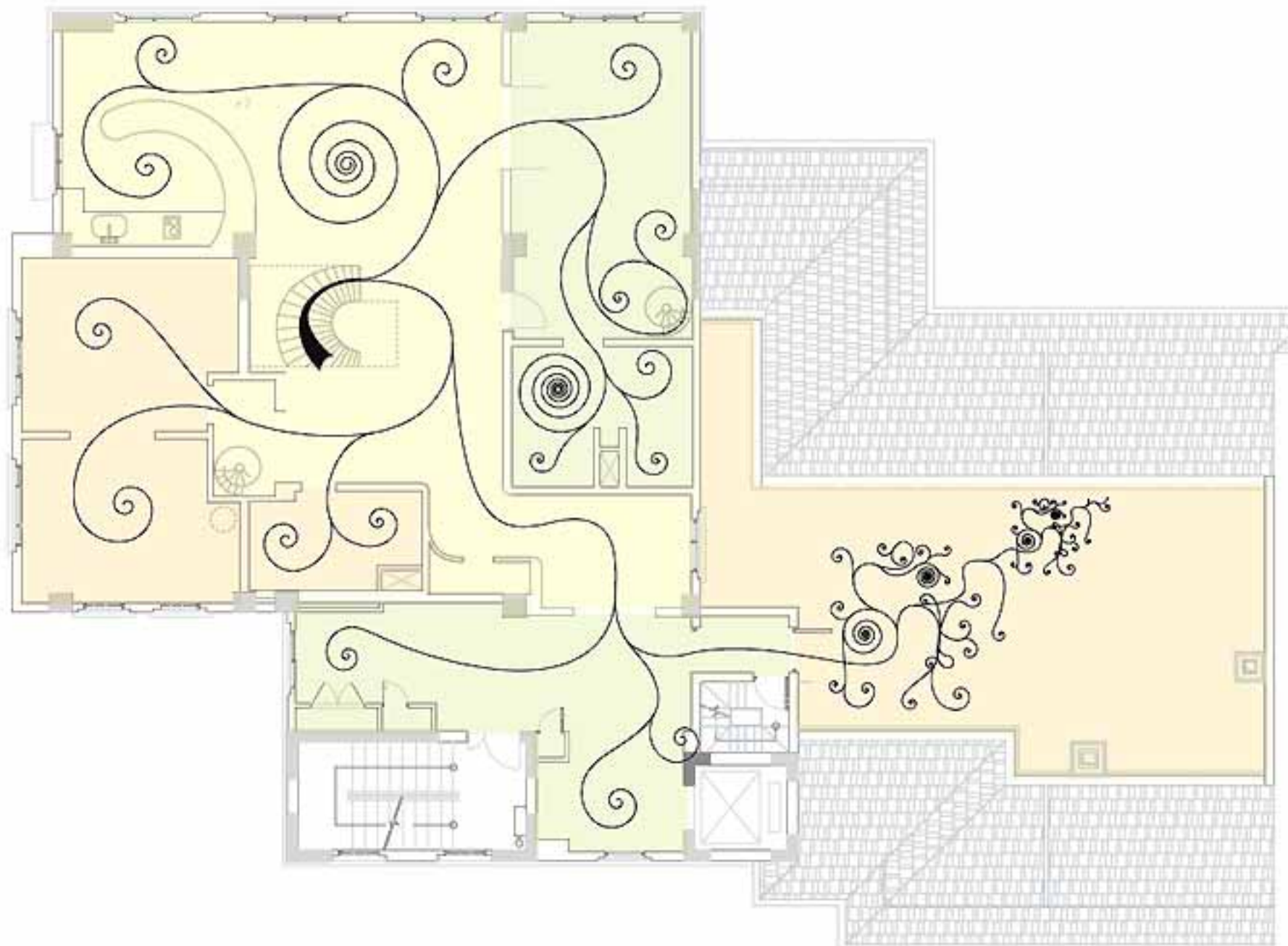
- Unknown Chinese Poet

AN EXTRAORDINARY IDEA REQUIRES AN EXTRAORDINARY APPROACH

This has been an incredible journey of discovery. The process of taking an existing space, studying it, researching all the variables, concepting the use of space and a design language, then documenting that process was a challenge that required the design team to stretch well beyond the comforts of previous knowledge, skills and practices. We are excited to see this project continue from here to the planning, building and finally, decoration phases. When this style guide moves on to those designers and architects who will prepare actual building plans, it is our intent that the concepts embodied in this booklet are robust enough to extract a solid interior design.

Because VirtualMo is not an interior design or architecture firm, we were ill-equipped to properly assess the time and resources required to complete this style guide. Thus, we apologize for any inconveniences that might have been endured while this grand work was underway. However, we are confident and proud of the work contained herein and submit it with genuine enthusiasm and goodwill.

Mo would like to thank Mr. Jason Chen for extending this incredible opportunity to the designers and for his incredible patience. Also, the design team that collectively invested nearly 600 man-hours in this project showed incredible dedication and should be acknowledged for its hard work unyielding tenacity.



The VirtualMo design team is:

Mo Morales - Director
Toni Greaves - Lead Designer
Stephanie Dyer - Associate Designer
Severin Villager - Associate Designer
Laura-Jane Walker - Research Associate
Please direct any inquiries to:

Mo Morales
VirtualMo, LLC
4616 SW Patton Road
Portland, Oregon 97221
USA
[503] 260-3766
+1503 260 3766
wonderwall@virtualMo.com

